



U.S. ARMY



Route 1 Development

To Chamber of Commerce and SFDC

Chris Landgraf
Acting Director
Fort Belvoir Public Works

As of 06 NOV 2019



Agenda

- Belvoir Statistics
- Belvoir Projects
- Partnership Opportunities
- Questions



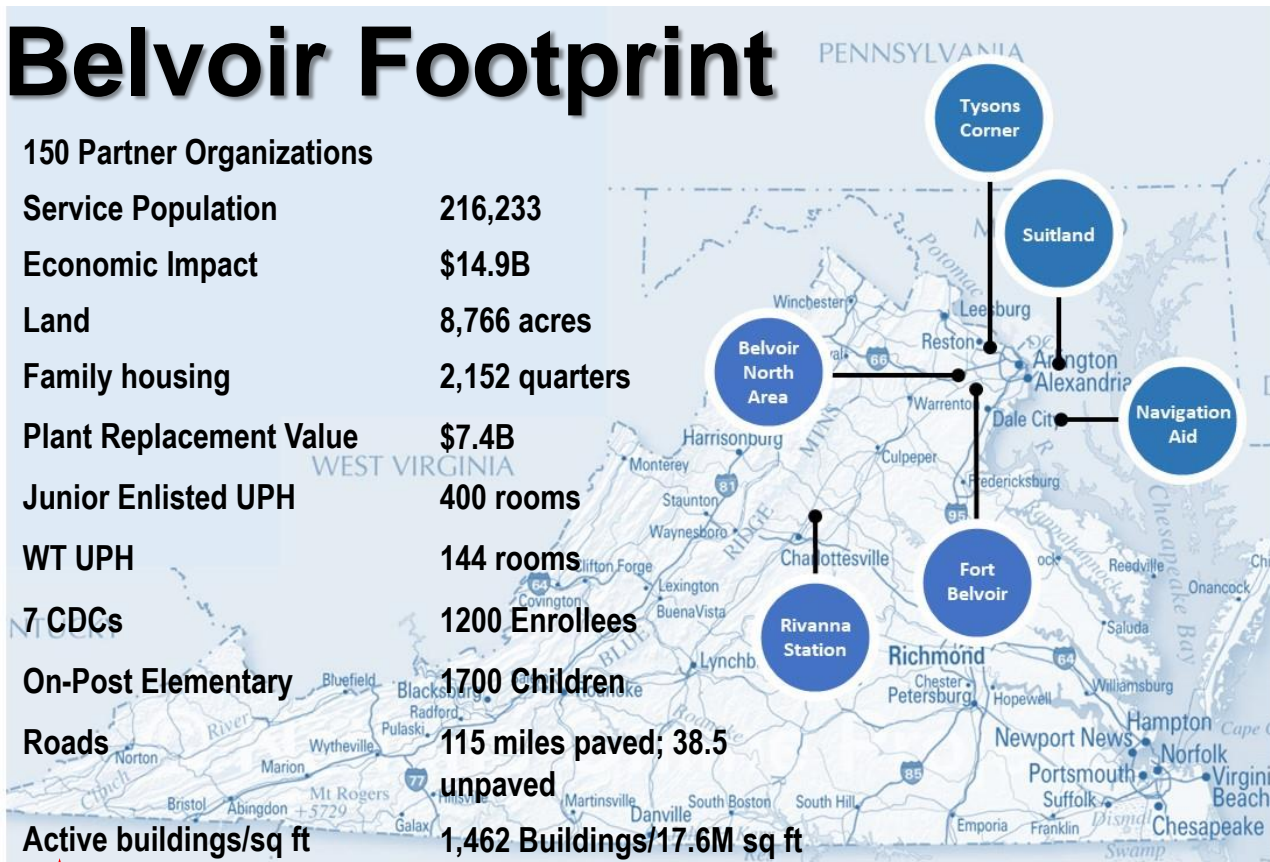


Fort Belvoir Statistics

Belvoir Footprint

150 Partner Organizations	
Service Population	216,233
Economic Impact	\$14.9B
Land	8,766 acres
Family housing	2,152 quarters
Plant Replacement Value	\$7.4B
Junior Enlisted UPH	400 rooms
WT UPH	144 rooms
7 CDCs	1200 Enrollees
On-Post Elementary	1700 Children
Roads	115 miles paved; 38.5 unpaved
Active buildings/sq ft	1,462 Buildings/17.6M sq ft

 **Largest School in Fairfax County**





Fort Belvoir Projects

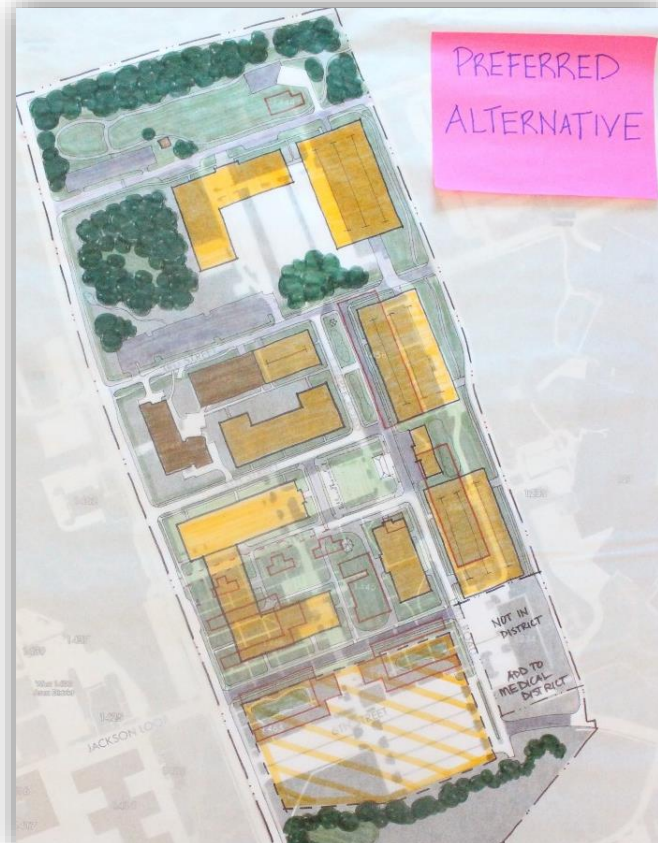
▪ Family Travel Camp (Phase 2)	2017	Updating NEPA
▪ 911 th EN Vehicle Maintenance Shop	2017	NEPA
▪ Intelligence Command Secure Administrative & Operations Facility (Phases 2/3)	2018	Working
▪ Ground Fueling Facility	2018	2019 Start
▪ VANG Cyber	2018	Working
▪ Dogue Creek Bridge Repair	2019	Working
▪ Protective Service Battalion Vehicle Storage Building	2020	Awaiting Funds
▪ SM-1 Decommissioning	2020	NEPA
▪ 249 th EN BN	2021	Planning
▪ DA Warehouse	2021	Planning
▪ Intersection Improvements	2021	FHWA Planning
▪ DoD Agency Relocation	2022	Planning
▪ Joint Forces Relocation	2023	Planning
▪ VANG Headquarters	2025	Planning





Fort Belvoir Area Development Plans

Former DeWitt Army Hospital converted to an Admin Campus



1400 East redesigned to an Modern Admin Campus





Fort Belvoir Partnerships

Partnerships in practice

- Golf Course (open to the public)
- Archery Range (open to the public)
- Lorton Workhouse Arts Program

Partnerships under consideration

- Vehicle Maintenance Support
- VDOT bulk salt purchases and road maintenance
- Fairfax County E911 CADD





Questions?

